

PARCHMENT

THE PAPER CITY



1976



C O N T E N T S

The Growth of Our City..... 1
City Organization..... 3
City Taxes 1976..... 4
City Hall..... 5
Our Governing Body..... 6
Administration..... 7
Business Offices..... 8
City Attorney..... 9
Building Inspector - Assessor..... 9
City Boards..... 9
Police Protection..... 10
Water Department..... 11
Sewage Department..... 12
Fire Fighters..... 13
Public Works Department..... 14
Our Park..... 15
Recreation..... 16
Our Schools..... 17
The Library..... 18
Where We Live..... 19
Churches..... 20
Shopping Centers..... 21
Business..... 22
Industry..... 23
Past and Present Commissioners..... 24

Printing by Economy Printing Co.
Half-tones by Panoplate Lithographics Inc.
Paper contributed by Brown Co.

THE GROWTH OF OUR CITY

The City of Parchment traces its beginning to the founding of the Kalamazoo Vegetable Parchment Co. in 1909. It was founded by Mr. Jacob Kindleberger (Uncle Jake) on a borrowed capital of \$50,000.00. As the company grew, more and more employees were added and with more employees the community also began to grow. The first homes, six of them were built on Riverview Drive in 1915. Later eight more were built across the road from the Schau home. At this time the northern part of the Schau farm was plotted out and a street was made. The street, Oak Grove, still goes by its original name and was the first street in Parchment.

Mr. Kindleberger decided that it would be wise to work out a plan for a model village and to follow the plan decided upon as it was apparent that the community would continue to grow. This was accomplished with the help of a committee picked from the community. The result is the city as you see it today.

Many of the town improvements and community services were accomplished with a two fold purpose in mind. It was Mr. Kindleberger's desire during the depression to see that everyone had enough work to provide their families needs.

There was little welfare as such in Parchment, instead men were given work building their own community. Many were given work helping to develop a forty acre tract of land that belonged to Mr. Kindleberger and was situated in the central part of the community. It was worthless as farm land or for building. However, with Mr. Kindleberger's foresight and help and a great deal of help from the mill the beautiful Kindleberger Park was shaped out of the stony hills and gullies. This beautiful park was a gift to the city and it's people from Mr. and Mrs. Kindleberger and stands today as a living memorial of their generosity.

By 1930 the total population had grown to 511 persons and in that same year the Governor had approved a charter and Parchment officially became a village. By 1931 Parchment was taking on the look of a real city. Excavation work on the streets was going steadily forward. They were laying pipes for sewers and making connections preparatory to paving. Island Avenue in front of the company office and Riverview Drive between Glendale Blvd. and Oak Grove were the first to be paved. Signals were installed and the business district took on new life. Considerable credit was given to the Village Commission who proved to be a capable and efficient body.

Parchment continued to grow under the paternal guidance of the mill, Uncle Jake and the Village Commission. Taxes were low as the mill bore the greatest part of the expense. This was a situation that couldn't continue forever.

In 1939 by a vote of 230 yes to 13 no the citizens voted to become a 5th class city. By this time the population had reached 770. The mill was providing both water and fire protection, saving the city a large initial outlay such service would demand. As the city continued to grow it was apparent that the strong connection between the mill and the city would have to be severed. In 1952 the mill began to divorce themselves from the city. It was then that they turned the maintenance of the streets and the park over to the city. At the same time the city took over the job of city pick-up, a service provided twice weekly for many years, although the time came when it had to be cut back to a once a week service due to the work load of the city employees. The only mill employee to remain was Glenn Flamm who had worked in the Parks and Yards Department since 1938. He elected to go over to the city as their first full time employee. He is still working for the city today.

The mill realized it was quite a load to pass to the city all at one time, so it was done in steps. The second phase was the Water and Sewage Departments in 1954. It was turned over on a gift purchase basis, thus it was a bargain for the city and a tax break for the mill. It involved all the water mains, a large storage tank, and the sale of water to the city. A new pump house was built on Island Avenue on property leased from the mill. A new sewage disposal plant was built on property sold to the city by the mill. Thus the water and sewage became the city's responsibility.

The last phase was the turning over of the Fire Department. It was housed on mill property and the mill owned the equipment. A new fire truck was purchased and a new combination city hall and fire station was built on Riverview Drive. It was manned by volunteer firemen from the community and is second to none in the county.

In 1974 the Water Department was made completely modern with an up to date laboratory, some new wells and a new iron filtration system. A new 200,000 gallon water tower was installed.

Late in 1975 Glenn Flamm was named Parchment's first City Manager. With 37 years of experience and dedication of both Mr. Flamm and your elected city officials Parchment will remain a model city.

CITY ORGANIZATION

The City of Parchment has a Commission-Manager form of government and is a home rule city. There are five Commissioners including the Mayor.

On the first Monday following each regular municipal election the newly elected Commission meets and elects one of it's members as Mayor and another of it's members as Vice-Mayor, each to serve for a period of two years.

The Commission holds it's regular meetings on the first and third Mondays of each month at 7:00 in the city hall. The public is cordially invited to attend these meetings. The current Commission and City Officials are as follows.

- Mayor.....Merle Wood
- Vice-Mayor.....William Smith
- Commissioner.....Virginia Aldrich
- Commissioner.....Jack Krueger
- Commissioner.....Ronald Fleckenstien
- City Manager.....Glenn Flamm
- Clerk-Treasurer.....Carolyn VanderWeele
- City Attorney.....Gordon Kriekard
- City Assessor.....George Boyce
- Chief of Police.....Ralph Herrick
- Fire Chief.....John VanderWeele
- Supt. of Water & Sewage....Richard Rice
- Supt. of Public Works....William Cahill

CITY TAXES 1976

TAX RATE

The City of Parchment's tax rate for 1976 is 10.2 mills which means the property owners pay \$10.20 for each \$1,000.00 of valuation for real and personal property.

ASSESSMENT

In the State of Michigan, real and personal property (Machinery, and fixtures) should be assessed at no more than 50% of true cash value.

CASH VALUE

Land, buildings and inventory's true cash value is determined in accordance with the assessors' consideration of replacement costs less depreciation with obsolescence.

Machinery and equipment true cash value is depreciated in accordance with composite percentages as used by the State. This is in effect an index factor, less depreciation.

CITY TAX BREAKDOWN

1976 ASSESSED VALUATION

Real Property	\$ 15,560,050.00
Personal Property	8,492,320.00
Total Assessed Value	\$ 24,052,370.00

CATEGORY AND PERCENTAGES OF TOTAL TAX

<u>Real Property</u>	<u>% of Total Real Tax</u>
91 - Parcels of Commercial	19.98 %
18 - Parcels of Industrial	38.55 %
571 - Parcels of Residential	41.46 %
Real property pays 64.69% of the total city tax.	

<u>Personal Property</u>	<u>% of Total Personal Tax</u>
71 - Parcels of Commercial	5.10 %
2 - Parcels of Industrial	91.00 %
1 - Utility	3.90 %
Personal property pays 35.31 % of the total city tax.	

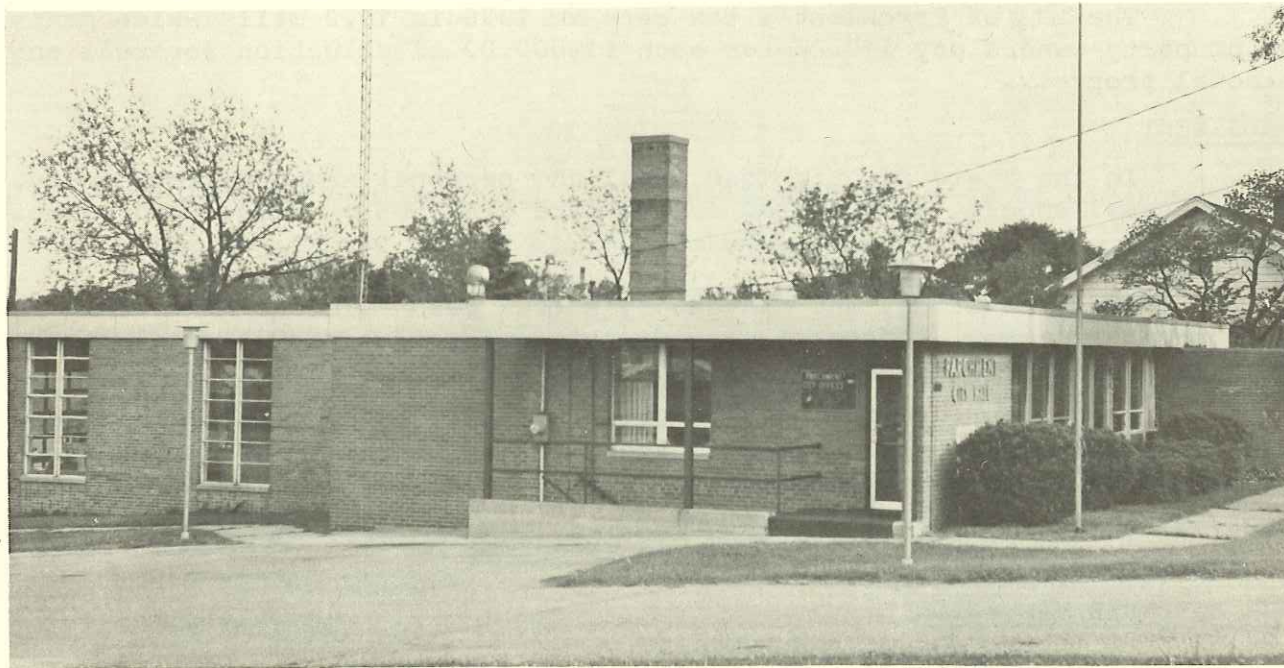
Real and Personal Property Combined

Industrial	- 57.07 %
Commercial	- 14.75 %
Residential	- 1.35 %

Number of Total Taxable Parcels

Real Property	- 680
Personal Property	- 74
Total Parcels	- 754

CITY HALL



Parchment City Hall located at 650 S. Riverview Dr.

CITY HALL HOUSES

- Administrative Offices
- Commission Meeting Room
- City Managers Office
- Police Department
- Fire Department

OUR GOVERNING BODY



Our present City Commission (shown seated l to r) Commissioner Jack Krueger, Commissioner Virginia Aldrich, Mayor Merle Wood, Vice Mayor William Smith and Commissioner Ronald Fleckenstein. The portrait on the wall is that of Mr. Kindleberger, founder of the mill and a great benefactor to the City of Parchment.

We on the City Commission are very proud of our city and deeply appreciate the many things done for us by our founder, Mr. Jacob Kindleberger.

As mentioned elsewhere, the KVP Company (now Brown Company) developed and named the little hamlet that today is PARCHMENT.

Our park is the envy of other cities and thanks to previous Commissions and their foresight we have good streets and Public Works equipment. Our new modern water system will serve us well for many years.

PARCHMENT has good schools and fine homes and churches. It is an excellent place to live and work.

Our citizens are the best and we are fortunate to have good industry which provides jobs and a good portion of our tax base.

We will do all we can to make our city even better in the future.

The City Commission

ADMINISTRATION



Glenn Flamm, Parchment's first full time employee, has spent most of his life in the area.

In November of 1975 the City Commission decided to change to the City Manager form of government based upon the principle of greater centralization of responsibility. The city was fortunate in having a man on the city payroll who knows the complexities of running our city government. Because of his long association with the city and his familiarity with it, Glenn Flamm was appointed to fill the post. He has served the city in almost every capacity during his thirty-eight years of employment and comes to the job well informed and well qualified to fill the position.

The City Manager's work is performed under policies adopted by the Mayor and City Commission and in accordance with the City Charter and Ordinance provisions.

BUSINESS OFFICES

The people greeting you, the citizen, most often either in person or on the phone are the ladies in the front office. Mrs. Carolyn VanderWeele a twenty year employee is the efficient City Clerk-Treasurer and is assisted by Mrs. Esther Drenth and Mrs. Dorothy Juzwiak. It is this busy office that sends out tax notices, water bills and special assessments. They collect the monies as the bills are paid and issue building permits.

Voter registrations are taken daily between eight and five, as well as on designated special days. The City Clerks office is responsible for all elections except school elections.

Most any questions pertaining to the city and its operations will be answered by calling this office.

CITY TELEPHONES

City Hall.....	349-3785
Police.....	342-1622
Fire Department.....	342-6643
Public Works Department.....	344-6400
Water and Sewage.....	345-0394

All departments except Fire can be reached weekends, nights and holidays by calling the police number - 342-1622.



Carolyn VanderWeele
City Clerk-Treasurer



Dorothy Juzwiak
and Esther Drenth



City Attorney

Gordon Kriekard is Parchment's City Attorney and has served for fifteen years.

Gordon is a member of Ford, Kriekard, Staton and Allen Law Firm, with offices in Kalamazoo, Schoolcraft and Mattawan.

The City Attorney is appointed by the Commission

← Gordon Kriekard

Assessor - Building Inspector

George Boyce has served as City Assessor and Building Inspector for ten years. He is a registered Civil Engineer and is associated with Wilkins and Wheaton engineering firm located in Kalamazoo.

The Assessor and Building Inspector is appointed by the Commission.

George Boyce →



BOARDS

BOARD OF REVIEW

The Board of Review meets each year on the second and third Monday in March, in the City Hall, to review assessed valuations. The 1976 Board consists of:

Lyle King

John Drenth

Clyde Kuney

Members are appointed by the City Commission.

ZONING BOARD OF APPEALS

The City Commission serves as the Zoning Board of Appeals.

PLANNING BOARD

The City Commission serves as the Planning Board.

POLICE PROTECTION

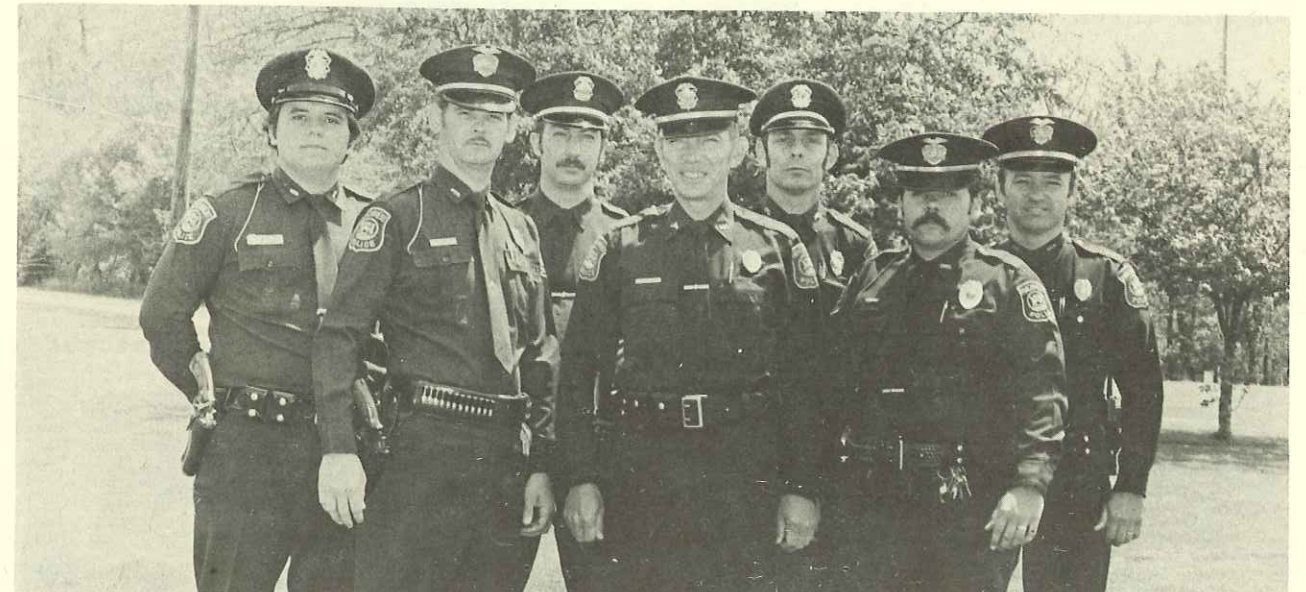
The citizens of Parchment have every right to be proud of their Police Department and the service it renders to the people. Under the able direction of its Chief, Ralph Herrick, who has worked for the city for eleven years they serve the city well. Besides Chief Herrick, other officers include Officer Rowland Smith, Officer Dennis Angel and Officer Forrest Wilson. They are assisted by part-time officers when necessary, they are Officers Roger Tuinstra, Michael Szekely, Kenneth Horton and Michael Capman. All of these officers have had special police training and meet all qualifications required by law.

The department provides traffic control for the city twenty-four hours a day, seven days a week. Other services include checking business and industrial properties, checking homes of absent owners when they are advised that the owners will be away for any length of time. They maintain and supervise school crossings and guards, provide emergency school protection and investigate complaints.

Any time a citizen is in need of any city service be it from the Water, Sewage or Public Works Department on any night, holiday or weekend, they need only to call the police telephone number, the officers have a call list of key city employees and will contact them to help with any emergency that might arise.

All phone calls to the Police Department on week days are answered by employees at city hall and relayed by two-way radio to the officer on duty. An extension to our police phones has been installed at the County Sheriffs Department. It is the Sheriffs Department who answers and relays the call on nights, weekends and holidays.

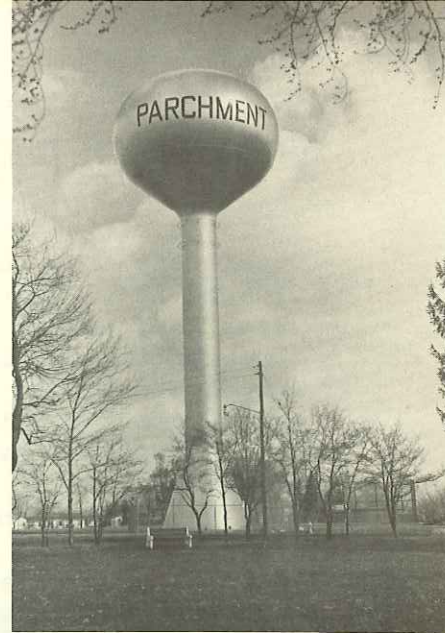
Your police department is always near at hand to protect you the citizen and your property.



With your welfare and safety in mind the following officers serve the community: Back Row (l. to r.) Officers Michael Szekely, Kenneth Horton, Roger Tuinstra and Chief of Police Ralph Herrick. Front Row: (l. to r.) are Officers Forrest Wilson, Rowland Smith and Dennis Angel. Officers Tuinstra, Szekely and Horton serve on a part-time basis as does Officer Michael Capman (not shown).



Supervisor Richard Rice and Stephen Bentz



The new watertower located in Kindleberger Park.

SEWAGE TREATMENT

Richard Rice Supervisor and Stephen Bentz operate the sewage treatment plant.

The plant was built in 1955 and is a primary and secondary trickling filter plant with a peak capacity of 600,000 gallons per day.

The sewage plant has been operating efficiently up to plant design, but due to the up grading of the effluent from the plant to the Kalamazoo river and obsolescence of the plant, the City Commission with the help of a consulting firm is making a study of the future of the sewage plant. The study is being financed by a Federal grant.

WATER DEPARTMENT

Richard Rice supervises the operation of the Water and Sewage Departments and is assisted by Stephen Bentz. Mr. Rice has all the necessary state licenses and the experience to operate the Water Department.

The City Water Department consists of three, twelve inch gravel park wells capable of pumping 4,000,000 gallons of water per day. There is room for three more wells in our present well field when needed.

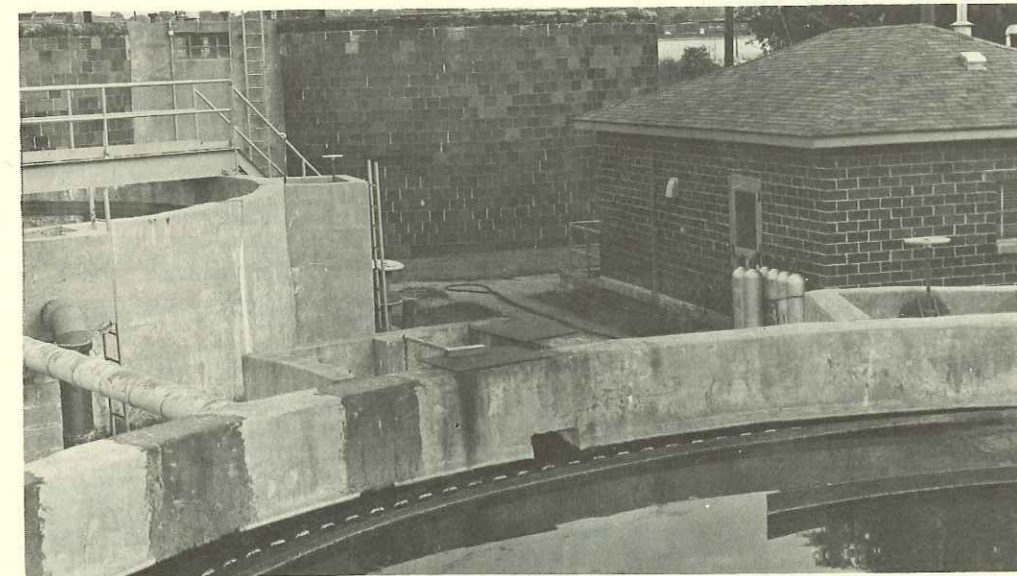
The water system also consists of 14 miles of water main, eighty fire hydrants, a 200,000 gallon water tank and a modern iron removal plant, with complete laboratory facilities in which all necessary tests are made to satisfy the State Health Department.

The only chemicals added to our water are chlorine, which is required by the health department, and flouride.

In 1975 125,000,000 gallons of water was pumped to the city customers.



The new City Water Department with it's iron removal plant was constructed in 1974 at a cost of a half million dollars.



The Sewage Disposal Plant

Trickling Filter System





Volunteer firemen (back row l. to r.) Fire Chief John VanderWeele, Henry Vander Bor, Robert Jolliffe, Robert Tardiff, Edward Randt, Loren Locke, Vernon Morehouse, Ronald Fleckenstein, Peter Loher, Jerald Jarsma and Robert Hilboldt. Front row (l. to r.) George Carson, Richard Elsmann, Douglas Drenth, Michael Elkins, Douglas Pardee and Donald White. Not shown are Assistant Chief Neil Schoonhoven, Peter Bourgeois, Tom Elsmann and Mrs. M. Locke radio operator.

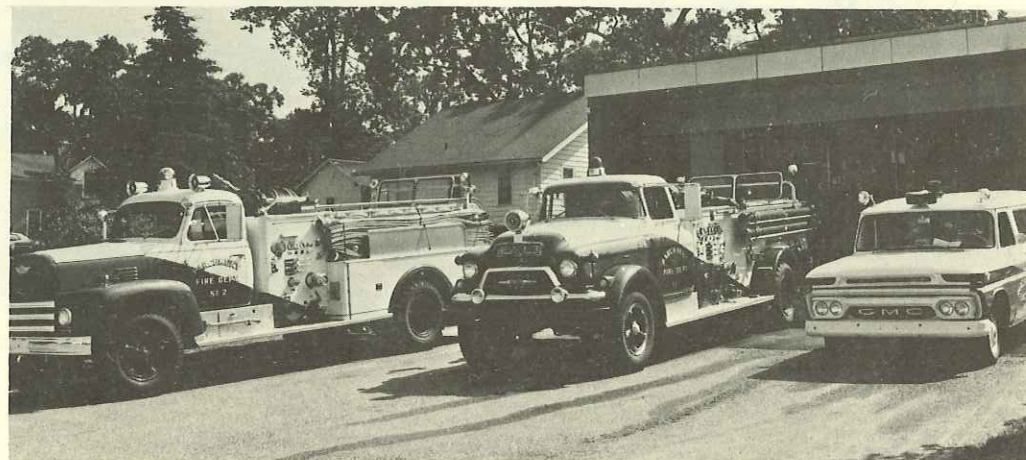
FIRE FIGHTERS

With Chief John VanderWeele and Assistant Chief Neil Schoonhoven at the helm, the men who serve our community as volunteer fire fighters maintain a well organized department, one that is recognized as one of the best in the area. It has an enviable record throughout the county. Most of the men in the department have received training from the University of Michigan Fire Schools.

The department has an excellent communications system which includes twenty-four hour telephone service for fire calls and a two way radio system on all equipment, plus tie in with all fire departments in the county. All firemen have radio monitors in their homes or place of work and receive all fire calls directly from the answering service. As double protection we have a fire siren. It's signals are as follows.

1. Regular fire, or emergency -- four short blasts.
2. Civil defense -- one long blast of three to five minutes.
3. In case of disaster of any kind in this area the siren will be sounded for three to five minutes.

The department's major equipment consists of two fire trucks with 750 gallon pumps, one emergency first aid panel truck completely equipped for all emergencies, two inhalators and resuscitators, one smoke ejector, five Scott Air Packs and one auxilliary pump.



Fire fighting equipment at station.



The Public Works Department has the most up to date motorized equipment.

THE PUBLIC WORKS DEPARTMENT

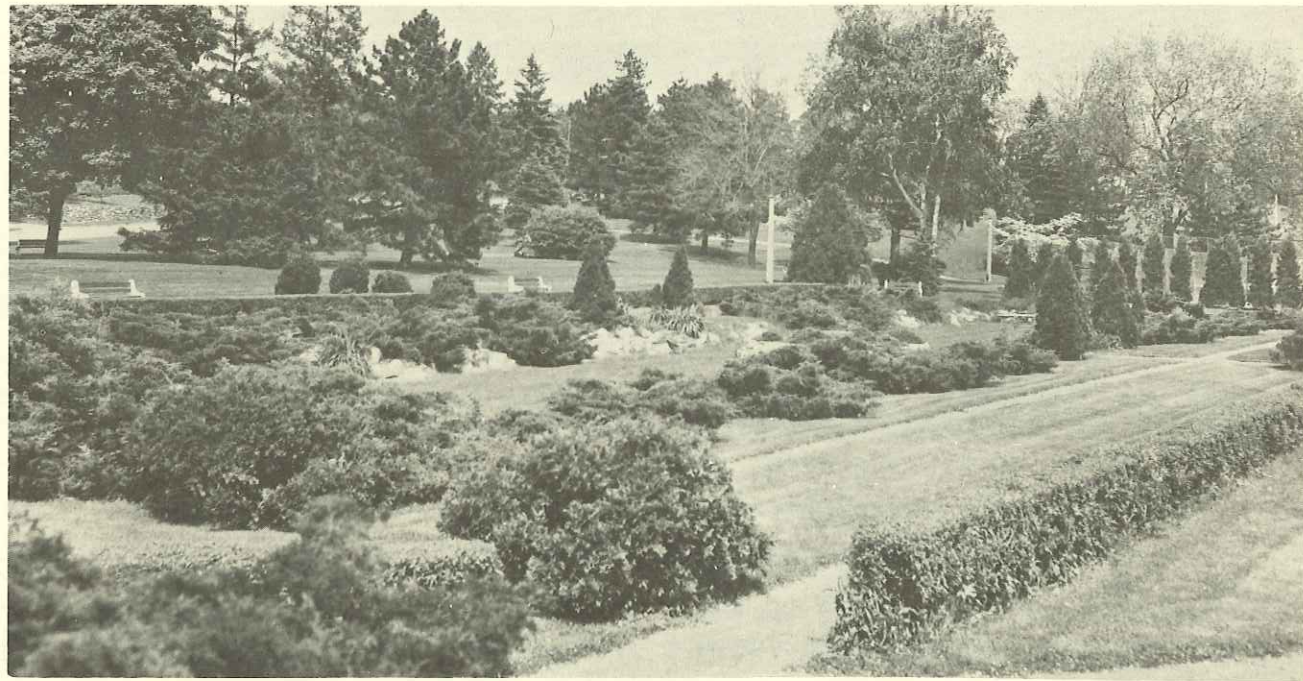
The Public Works Department is supervised by William Cahill, an employee of the department for eighteen years.

The department is responsible for the collection and disposal of refuse and provides a free pick-up service once each week. They are responsible for the construction, maintenance and repair of the municipal water and sewage transmission systems, recreation areas, parks, streets, curbs, gutters, sidewalks and municipal buildings. The recreation areas consist of forty acres of parks with three picnic shelters, five ball diamonds, two tennis courts, horse shoe courts and two play grounds.

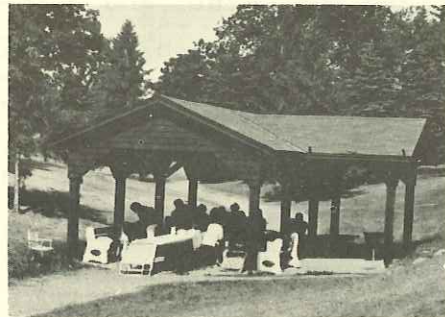
The department has the most up to date motorized equipment, and maintains: fourteen miles of water mains, eighty fire hydrants, eleven miles of sanitary sewers, ten miles of storm sewers, twelve miles of streets, two hundred street lights, four hundred regulatory traffic and street signs, and sixteen miles of side walks.



Shown standing l. to r. are Public Works employees John Barnes, Supervisor William Cahill and Richard Boyer. In the front row are James Hill and Henry Stacknik. Another employee, Carl Flamm is not shown.



OUR PARK



One of the three covered picnic shelters in the park.

As late as 1930 Mr. Kindleberger stood and looked at the tract of stony land with its hills and gullies that stood in the central portion of the community. He saw in it beauty, recreation and employment for the men of the community during the depression years. With his help and a great deal of help from the mill and the men in the area it was developed into the beautiful park that now stands in Parchment. The pride of our citizens and the envy of many cities more than twice our size. It was a gift to Parchment and its people from Mr. and Mrs. Jacob Kindleberger in 1933 and stands as a living memorial of the generosity of the man who founded the Kalamazoo Vegetable Parchment Co. here in 1909.



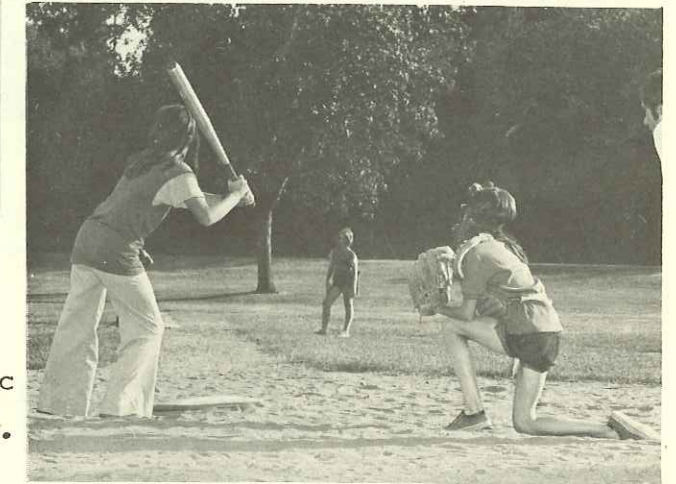
Playground on Maple St. at the park entrance.

RECREATION

Our boys Little League baseball team were State Champions in 1974.

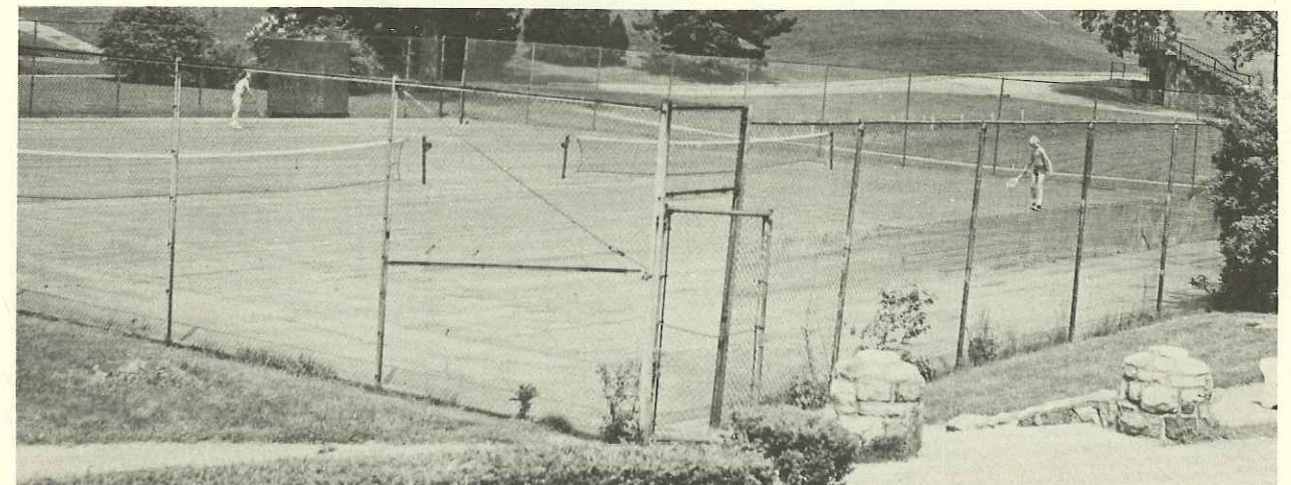


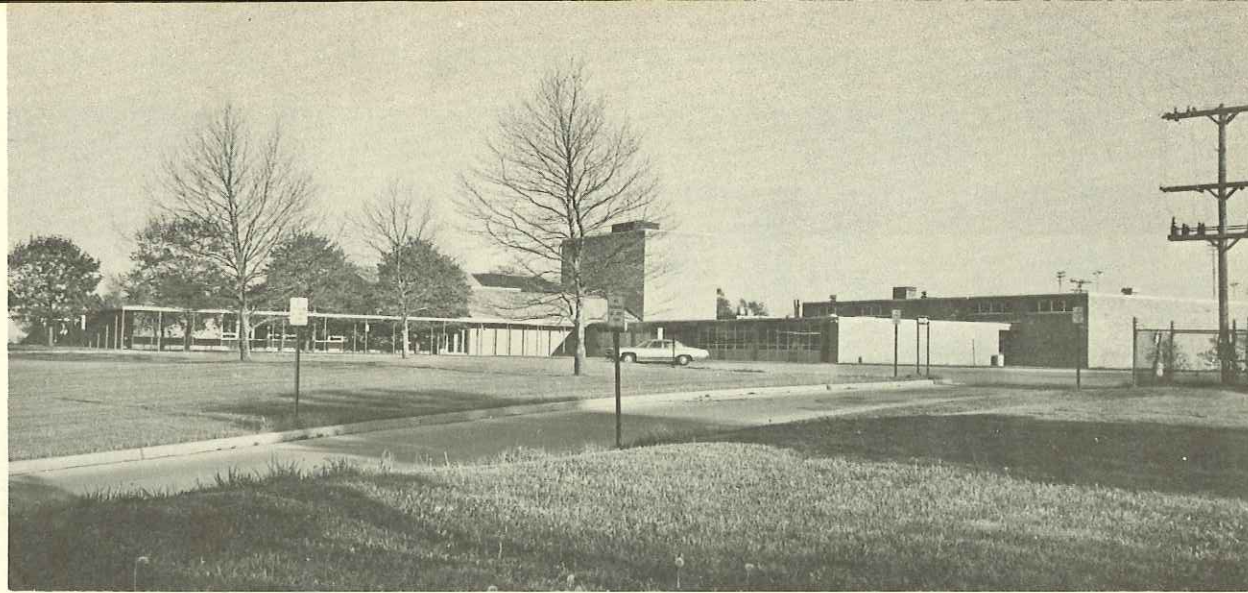
The girls are just as enthusiastic as the boys about Little League ball.



A recreation program is sponsored and paid for by the city. Under the direction of qualified adults a complete program with supervision runs for a period of six weeks. All youth between the ages of 6 and 13 are welcome to participate in such activities as boys and girls softball, tennis, scavenger hunts, bike parades, pet contests etc. Approximately 500 people participate in boys baseball and girls and mens softball. The park was given to the people and it is a pleasure to see it used.

Tennis courts do double duty, they are enjoyed by all ages during the summer, and as soon as the winter weather permits they are flooded to make an ice rink for the skaters.



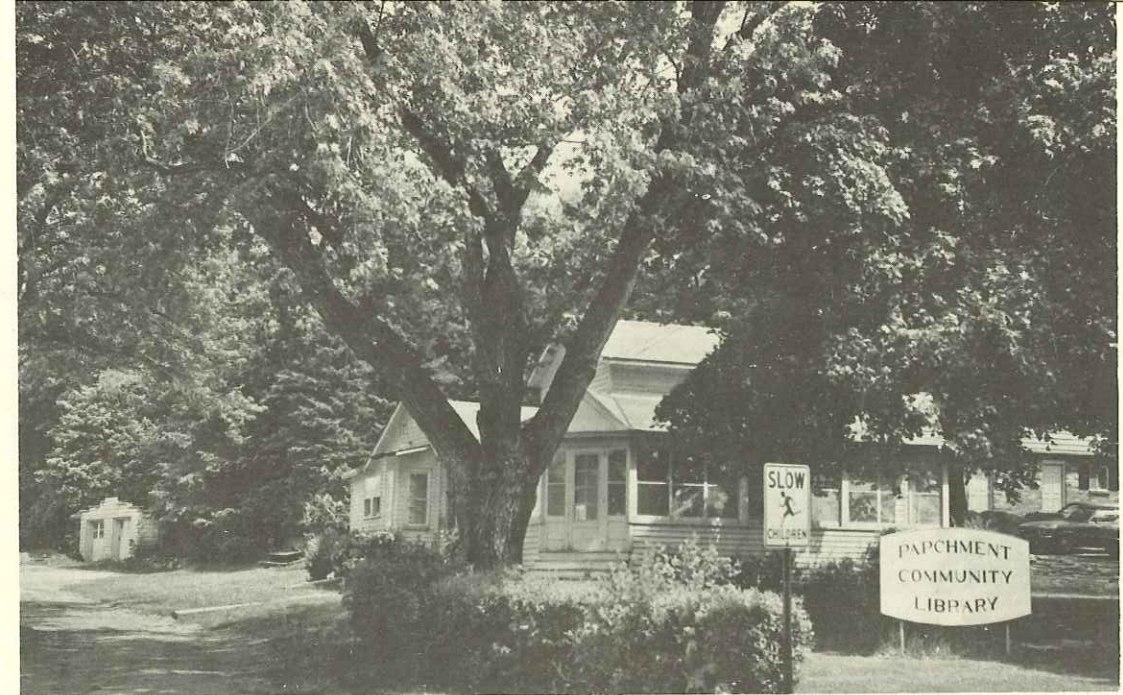
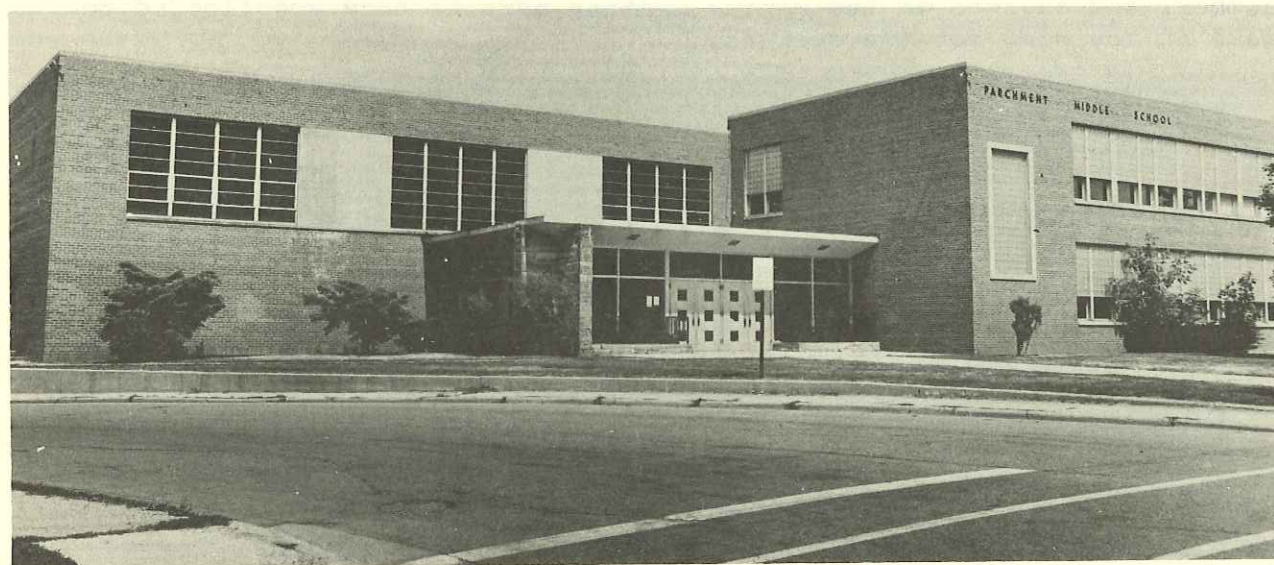


The Parchment High School, completed in 1959, graduated its first class in 1961.

OUR SCHOOLS

Parchment's school system is an excellent one, with grades k thru 12. There are seven buildings in the system and they employ between 200 and 250 people. In 1976 the enrollment reached 2321 pupils. Students enjoy all the benefits offered in most school districts.

The Parchment Middle School located on Riverview Drive.



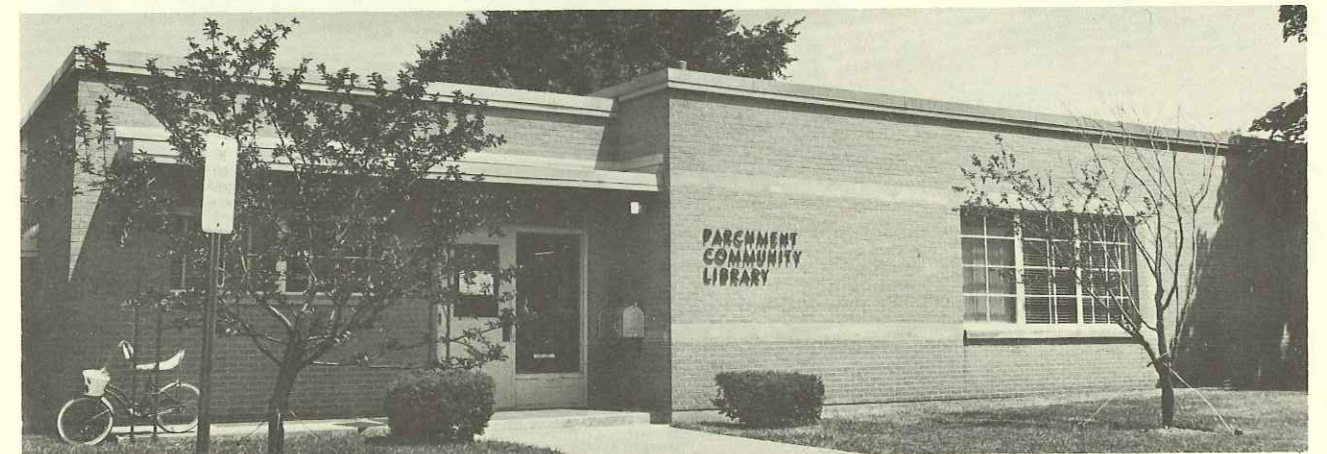
In 1965 they moved into the old King home.

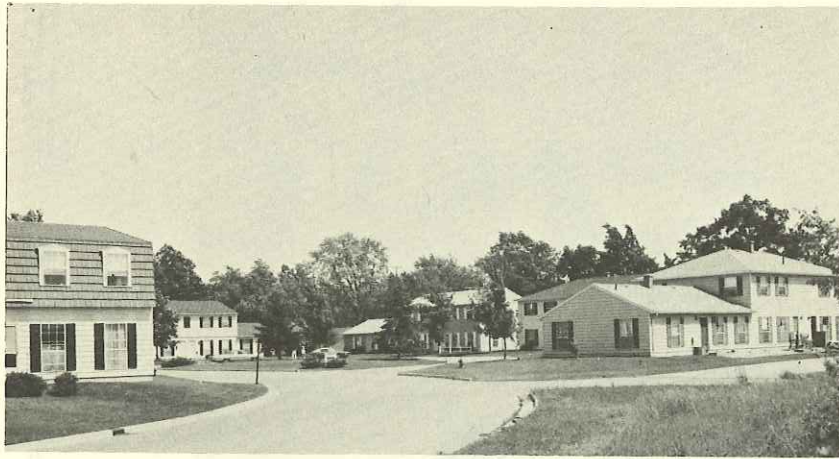
The Parchment Community Library was founded in 1963 by the Friends of the Library. They were located in the old Schau home on Riverview Drive. It became a part of the Parchment School system in 1965 and moved into the old King home at the entrance of the park. The home was leased from the city for \$1.00 per year. As services expanded to include records, audio visual equipment and films, magazines and patterns, they outgrew their quarters once more. In 1974 the school leased a part of the office area from the Brown Company and moved the library to its present location.

One room is set aside as The Michigan Room and contains State and local history.

Mrs. Veva Abrahamsen is the library director and is assisted by four employees.

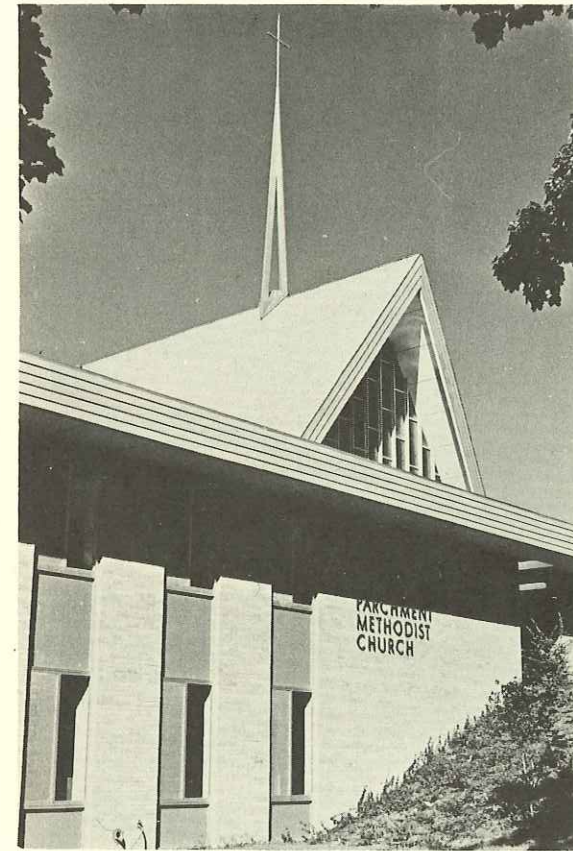
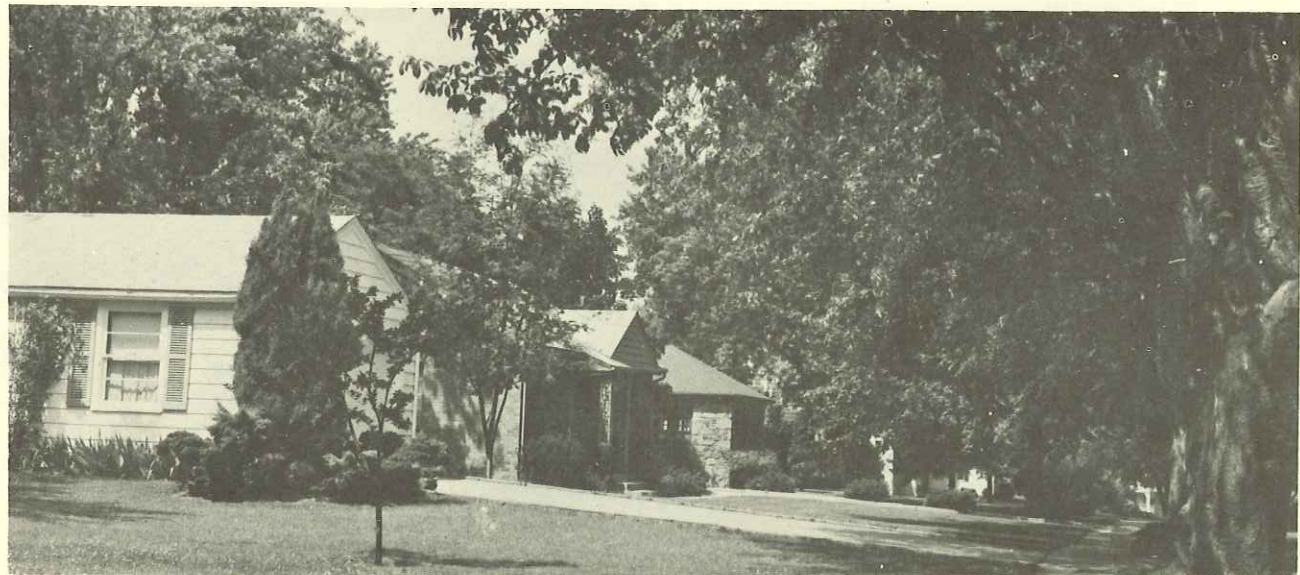
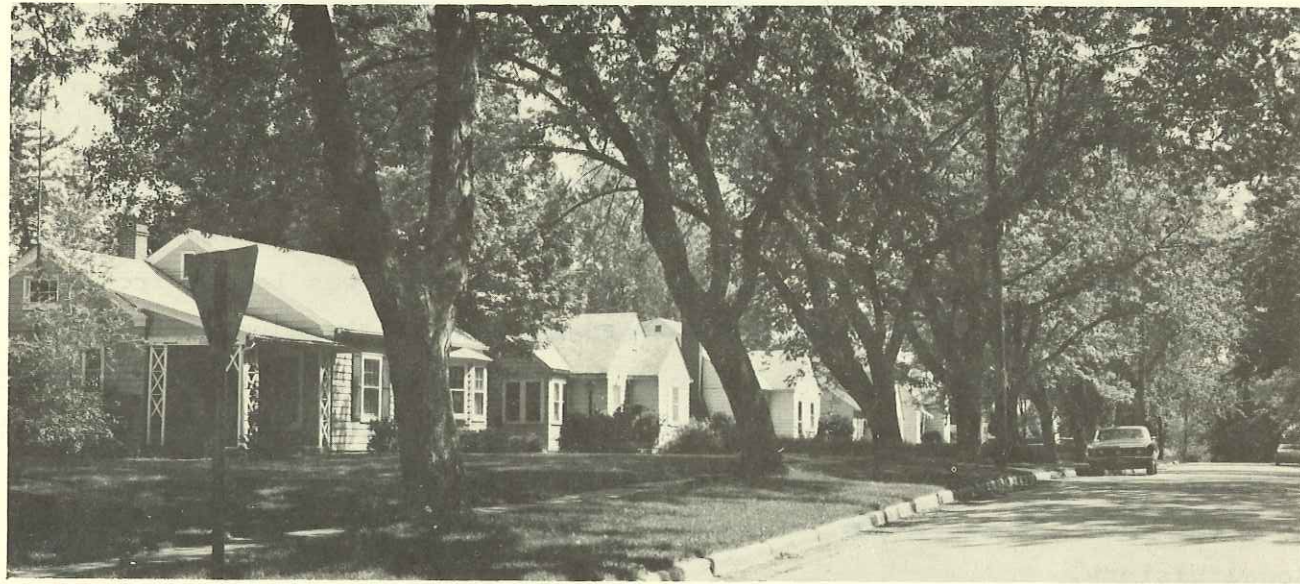
The library was relocated in Brown Company offices in 1974.





Parchment people take pride in their homes and quiet serenity prevails throughout the residential areas of our city. Well kept homes with lovely lawns on beautiful tree lined streets add to the attractiveness of the community.

WHERE WE LIVE



AND WORSHIP



Parchment United Methodist Church

Photo by Kalamazoo Gazette

From its beginning the church has played an important part in the community life. Although there are many churches in the area there are only three within the city, the United Methodist Church on Glendale Blvd., the Riverview Wesleyan Church and St. Ambrose Catholic Church.

Riverview Wesleyan Church



** Picture of St. Ambrose not available.



Located at the north city limits are a newly modernized grocery store and the U.S. Post Office.

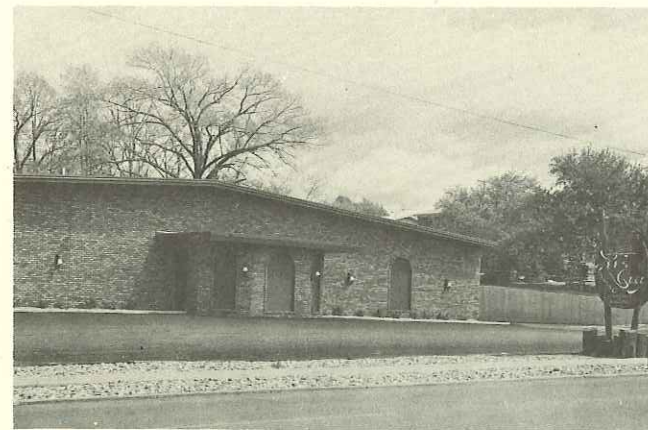
OUR SHOPPING CENTERS



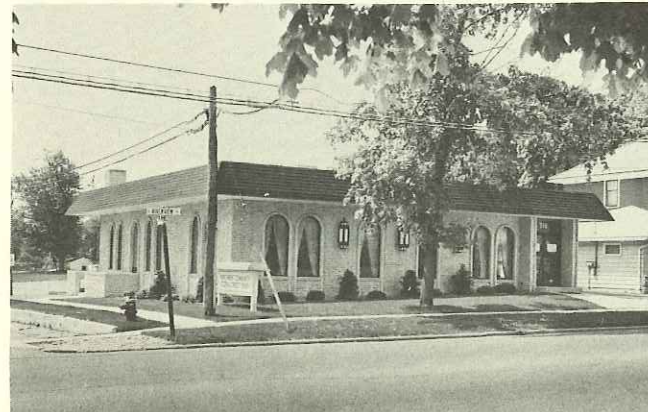
The central business area is the oldest shopping area and includes drug and florist shop as well as a pizza parlor, department store and a restaurant. A printing establishment is also located at the main corners.



A laundromat, grocery, kiddie clothing, a bakery, hardware, a restaurant an auto parts store, a discount store and a music and appliance store are some of the businesses in the south shopping center.



Lee's Quay



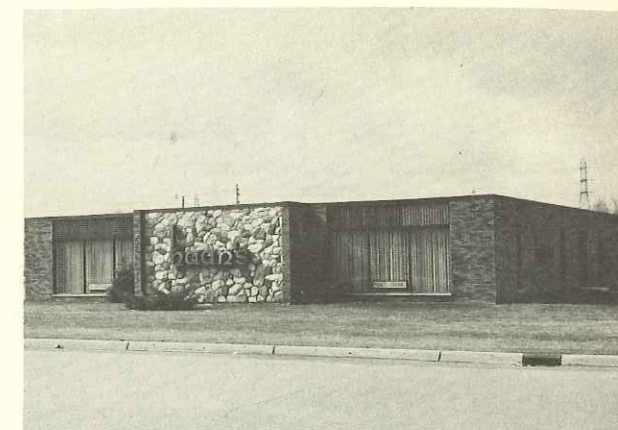
Parchment Community Credit Union.



First National Bank & Trust Co.



Economy Printing & Kal Photo Comp



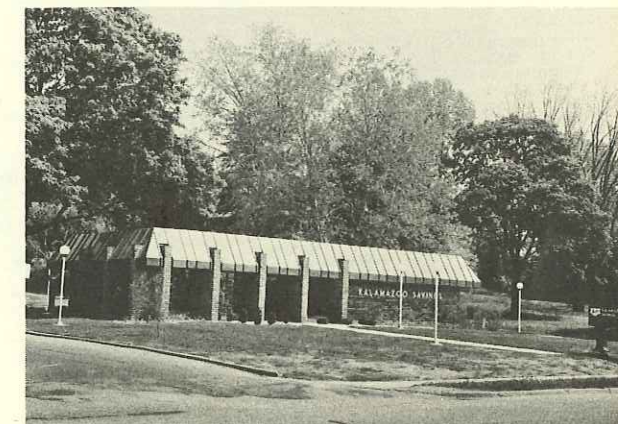
Haan's music and appliance

BUSINESS

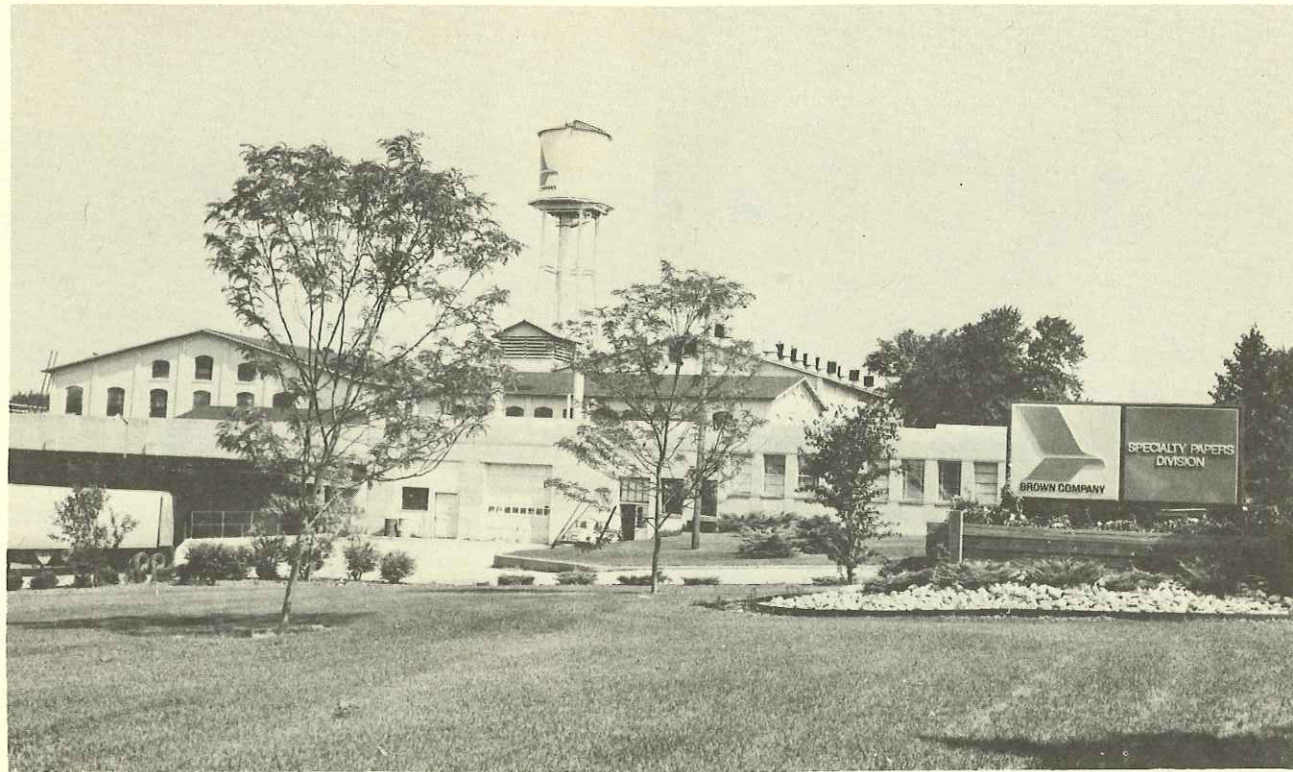
Fine business places make shopping convenient in Parchment.



Parchment Funeral Home



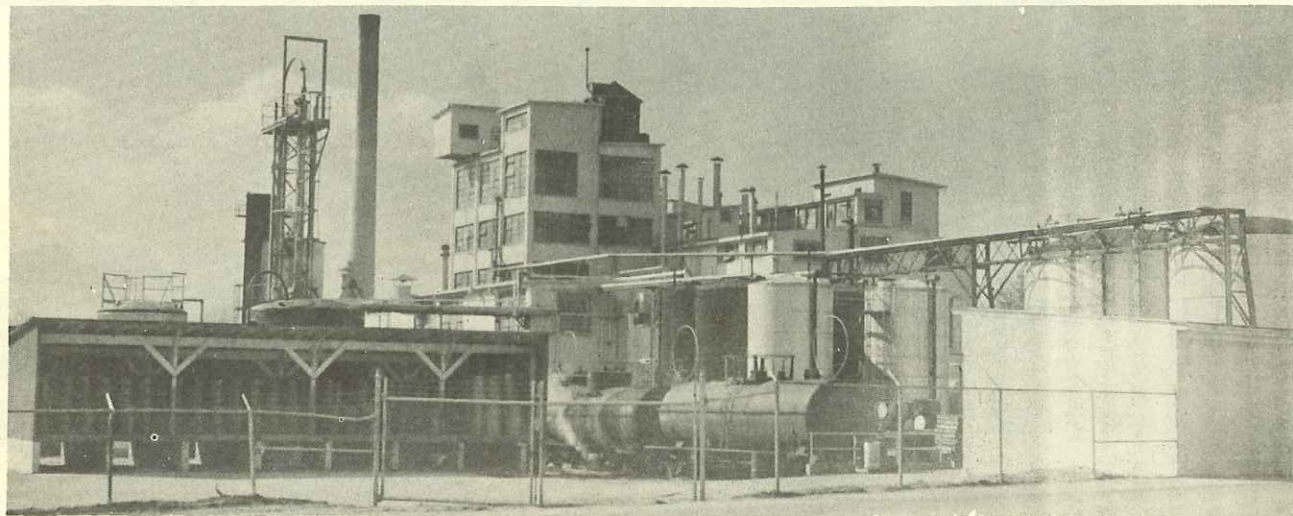
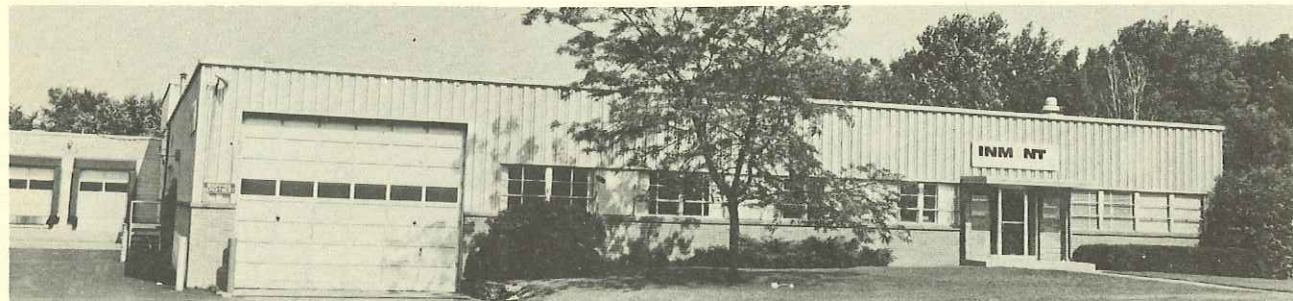
Kalamazoo Savings



INDUSTRIES

To them we owe so much....

Shown top to bottom, the Brown Company, Inmont Ink Company and Hercules.



Past and Present City Commission

Frank Libby *
 William Walker
 Alfred Southon
 George MacDonald
 Richard Rhem
 Emil Foster
 Joseph Schwiess *
 Horace Stone
 Forrest Christy *
 John Sinclair
 Bernard Vanden Berg
 Harley McDaniel
 Arthur Fitzgerald *
 Andrew Beam
 Frank Clark *

Robert Aldrich *
 Robert Caine
 William Schallhorn *
 Donald Lent *
 Rudolph Germanson *
 John Hamilton
 John Carter
 Ray White
 Merle Wood *
 Lyle King
 William Smith
 Virginia Aldrich
 Jack Krueger
 Ronald Fleckenstein

* Denotes Mayor



